

The ParaTrack Steering Tool is the heart of the Vector Magnetics suite of HDD tools. State of the art magnetic and gravity sensors in a lightweight yet rugged housing form an integrated survey and tracking package for the horizontal driller.

Magnetic tracking sources include:

- AC surface wires in loop or single-wire configuration
- Wires placed in a parallel bore
- Passive Magnetic Ranging to adjacent drillstrings for intersections
- The Beacon Tracker system allowing for precision surface tracking without wires including otherwise blind shore departures and approaches

Optional add-ons include:

- The ABIA providing inclination measurements directly at the bit
- The Pressure Module providing annular and pipe pressures while drilling

Unrivaled flexibility and reliability you can count on and has made ParaTrack the industry standard for magnetic underground tracking for over 15 years.

## Features

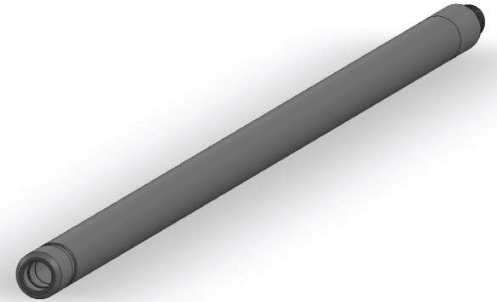
- Integrated survey and tracking package for the horizontal driller
- Precision tracking to external magnetic references

## Benefits

- Compatible with a wide array of magnetic tracking sources
- Rugged, field-proven design
- Verifies VM and 3rd party Gyro surveys

## Applications

- Steering, surveying, and borehole tracking
- Annular and drillpipe pressure monitoring (requires optional Pressure Module)



## Specifications

**Survey Precision:** +/- 0.02° (inclination), +/- 0.05° (azimuth), +/- 0.5° (toolface)

**Outside Diameter:** 1.75" (4.45 cm)

**Length:** Head to foot: 52.8" (134.1 cm), head to sensors: 41" (104.1 cm)

**Weight:** 19 lbs (8.6 kg)

**Electrical Connection:** 1-3/16" 12tpi female (standard wet connect)

**Internal Operating Temperature:** 0-85° C

**Pressure Rating:** 17,000 psi (1200 bar)

